



KING COUNTY

1200 King County Courthouse
516 Third Avenue
Seattle, WA 98104

Signature Report

February 13, 2017

Ordinance 18454

Proposed No. 2017-0004.1

Sponsors Dembowski

1 AN ORDINANCE adopting and ratifying Growth

2 Management Planning Council Motion 16-1.

3 BE IT ORDAINED BY THE COUNCIL OF KING COUNTY:

4 SECTION 1. Findings:

5 A. Growth Management Planning Council Motion 16-1 recommends that Urban
6 Growth Area Map and the Potential Annexation Area Map in the 2012 King County
7 Countywide Planning Policies be amended as depicted on the maps attached to Motion
8 16-1.

9 B. On September 28, 2016, the Growth Management Planning Council
10 unanimously adopted Motion 16-1, which recommends that the 2012 King County
11 Countywide Planning Policies be amended to adjust the Urban Growth Area boundary for
12 three technical amendments that involve road right-of-way adjustments and one
13 substantive amendment to contract the Urban Growth Area boundary from the city of
14 Issaquah's Potential Annexation Area at East Cougar Mountain.

15 SECTION 2. The amendments to the 2012 King County Countywide Planning

16 Policies, as shown in Attachment A to this ordinance, are hereby adopted by King County
17 and ratified on behalf of the population of unincorporated King County.

18

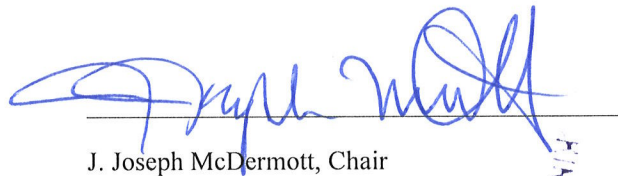
Ordinance 18454 was introduced on 1/17/2017 and passed by the Metropolitan King County Council on 2/13/2017, by the following vote:

Yes: 9 - Mr. von Reichbauer, Mr. Gossett, Ms. Lambert, Mr. Dunn,
Mr. McDermott, Mr. Dembowski, Mr. Upthegrove, Ms. Kohl-Welles
and Ms. Balducci

No: 0

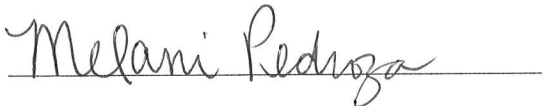
Excused: 0

KING COUNTY COUNCIL
KING COUNTY, WASHINGTON



J. Joseph McDermott, Chair

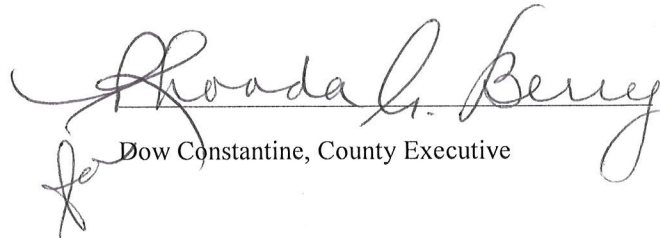
ATTEST:



Melani Pedroza, Acting Clerk of the Council

RECEIVED
2017 FEB 24 PM 3:47
KING COUNTY COUNCIL

APPROVED this 24th day of February 2017.



Dow Constantine, County Executive

Attachments: A. GMPC Motion No. 16-1

9/28/16

Sponsored By: Executive Committee

1
2
3
4
5
6
7
8
9
10
11
12
13
14
15
16
17
18
19
20
21
22
23
24
25
26
27
28
29
30
31
32
33
34
35
36
37
38
39
40
41
42
43

GMPC MOTION NO. 16-1

A MOTION amending the 2012 King County Countywide Planning Policies; addressing changes to the Urban Growth Area of King County and the resulting changes to the Urban Growth Boundary map and Potential Annexation Area map.

WHEREAS, the Washington State Growth Management Act, RCW 36.70A.110 requires counties to designate an urban growth area within which urban growth shall be encouraged and outside of which growth can occur if it is not urban in nature; and

WHEREAS, Countywide Planning Policy G-1 recognizes that King County may initiate amendments to the Urban Growth Area; and

WHEREAS; the King County Executive and the King County Council request the Growth Management Planning Council consider the attached amendments to the Urban Growth Area for eventual adoption by the King County Council and ratification by the cities; and

WHEREAS, Countywide Planning Policies DP-15 – DP-18 outline criteria for changes to the Urban Growth Area; and

WHEREAS, on May 25, 2016, the Growth Management Planning Council received a briefing on all of the potential changes to the Urban Growth Area under consideration by the King County Transportation , Economy, and Environment Committee; and

WHEREAS, on September 20, 2016, the King County Transportation , Economy, and Environment Committee recommended the following amendments to the Urban Growth Area be considered by the King County Council as part of their approval of the 2016 King County Comprehensive Plan.

NOW THEREFORE BE IT RESOLVED that the Growth Management Planning Council of King County hereby recommends that the 2012 King County Countywide Planning Policies Urban Growth Boundary Map and the Potential Annexation Areas Map be amended as depicted on the attached maps.

Dow Constantine, Chair, Growth Management Planning Council

44
45
46
47
48
49
50
51
52
53
54
55
56
57
58
59
60
61
62
63
64
65

ATTACHMENTS

Maps to Be Amended (with technical fixes to titles, as noted below)

~~Growth Management Planning Council~~ Urban Growth Area Boundary – Countywide Planning Policies, September 2016

Potential Annexation Areas – Countywide Planning Policies ~~October 2015~~, September 2016

For Reference – Detailed Site Maps Showing Specific Amendments to Urban Growth Area Boundary, as well as Amendment to East Cougar Potential Annexation Area

Urban Growth Area Contraction and Revision to Potential Annexation Area – East Cougar Mountain

Urban Growth Area Technical Amendment – SE 240th Street

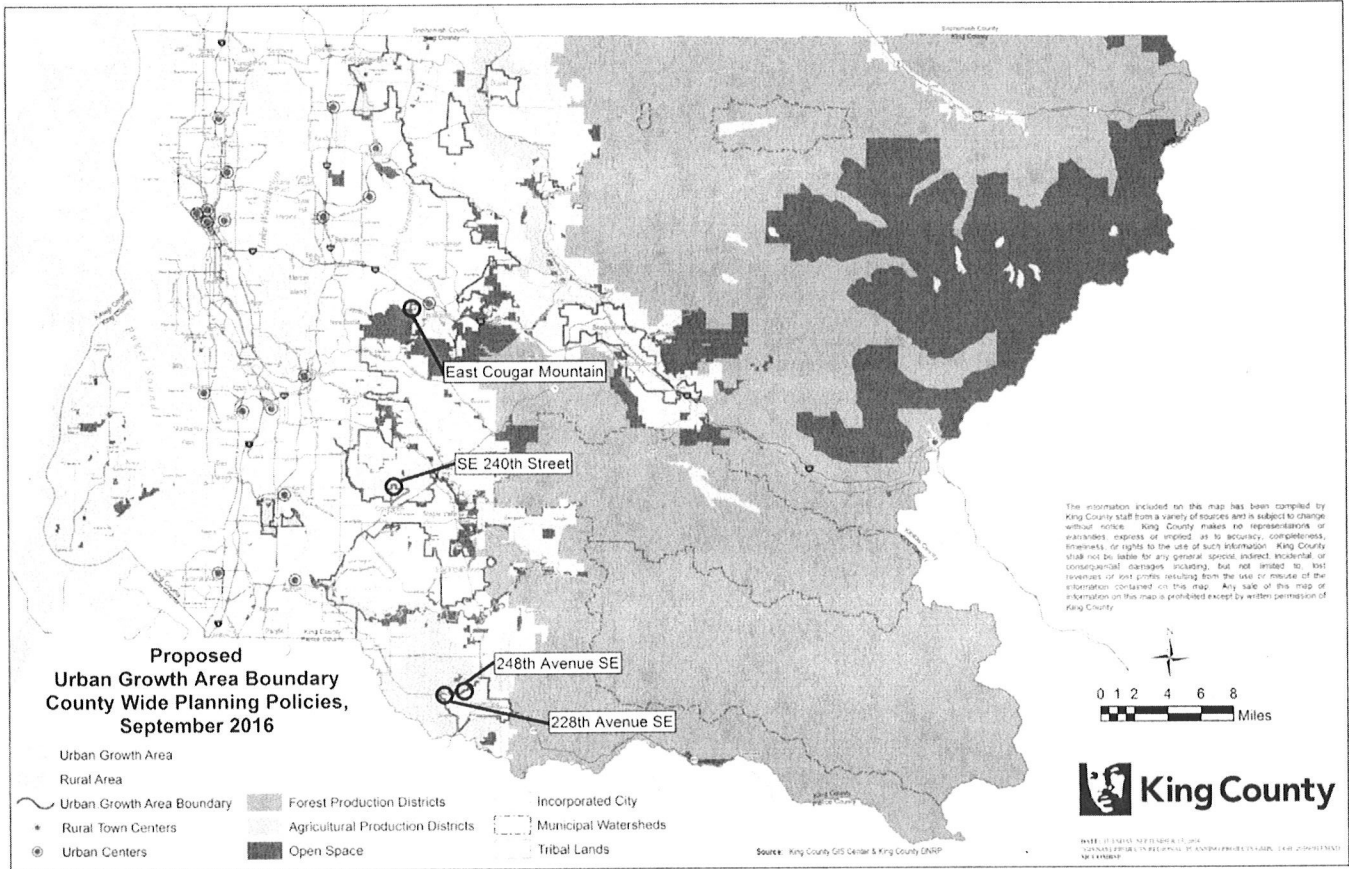
Urban Growth Area Technical Amendment – 248th Ave SE

Urban Growth Area Technical Amendment – 228th Ave SE

Maps to Be Amended (with technical fixes to titles, as noted below)

Note: Call out boxes to be removed following adoption by GMPC

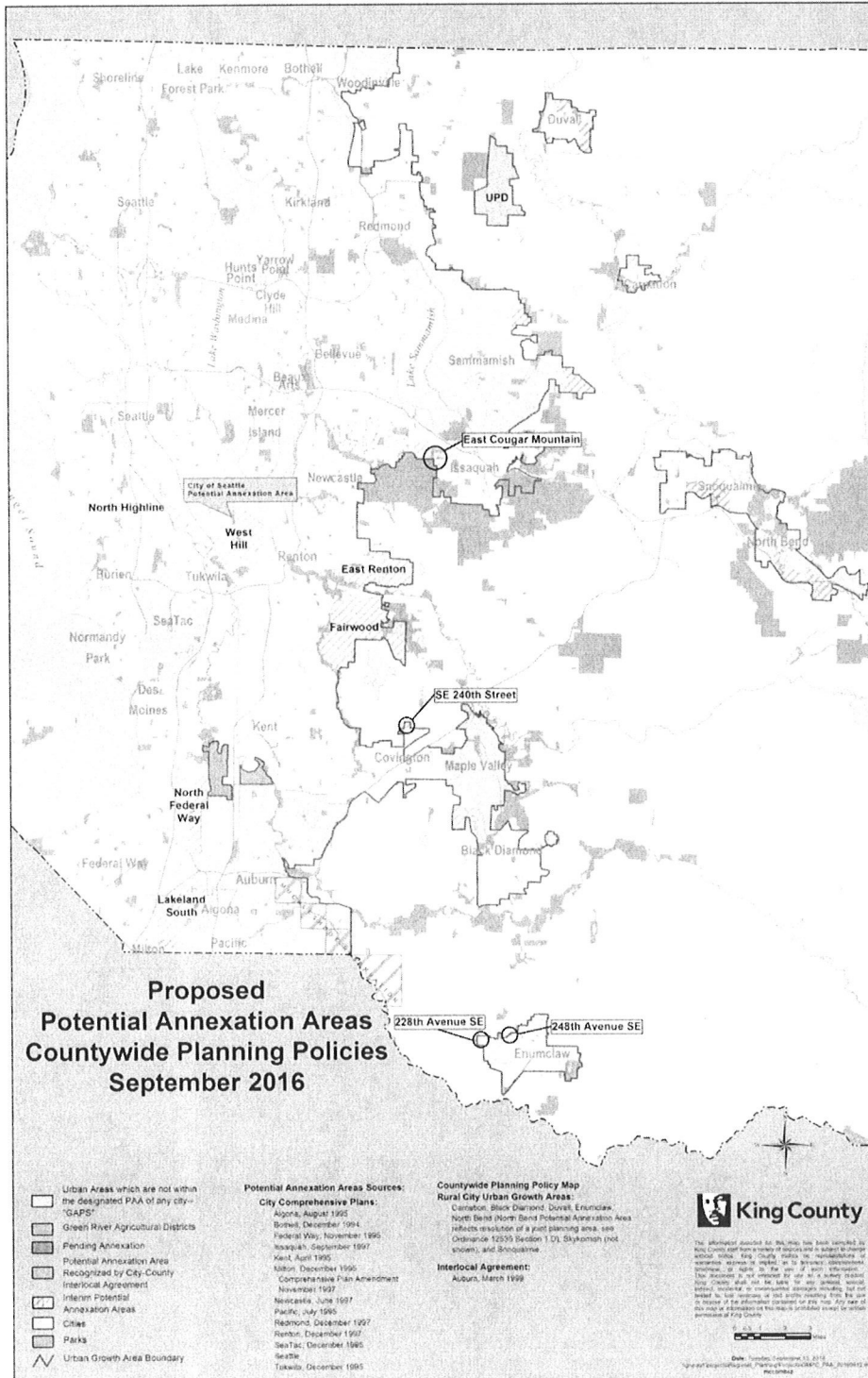
~~Growth Management Planning Council~~
Urban Growth Area Boundary – Countywide Planning Policies, September 2016



Maps to Be Amended (with technical fixes to titles, as noted below)

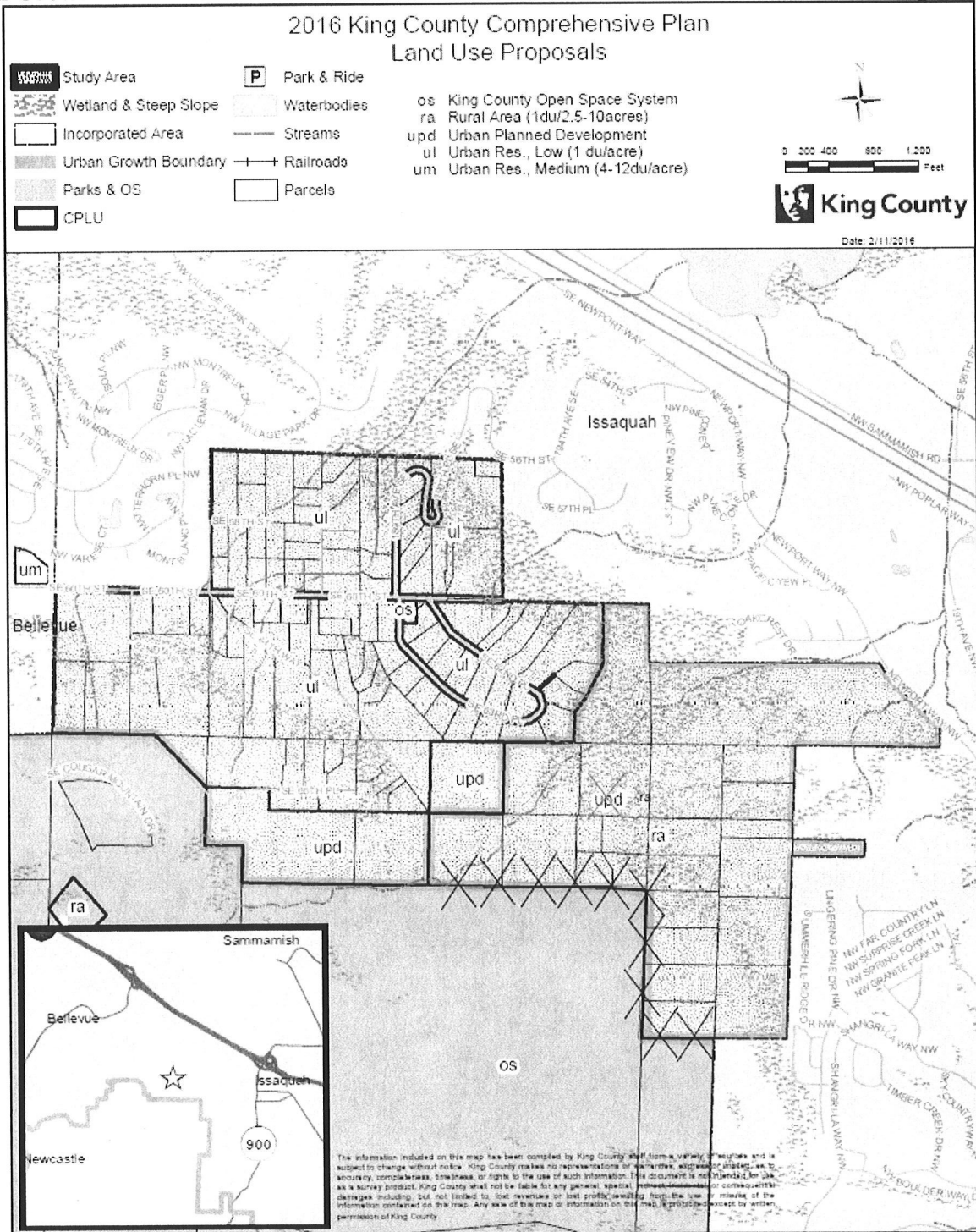
Note: Call out boxes to be removed following adoption by GMPC

Potential Annexation Areas = Countywide Planning Policies ~~October 2015~~, September 2016



For Reference – Detailed Site Maps Showing Specific Amendments to Urban Growth Area Boundary, as well as Amendment to East Cougar Potential Annexation Area

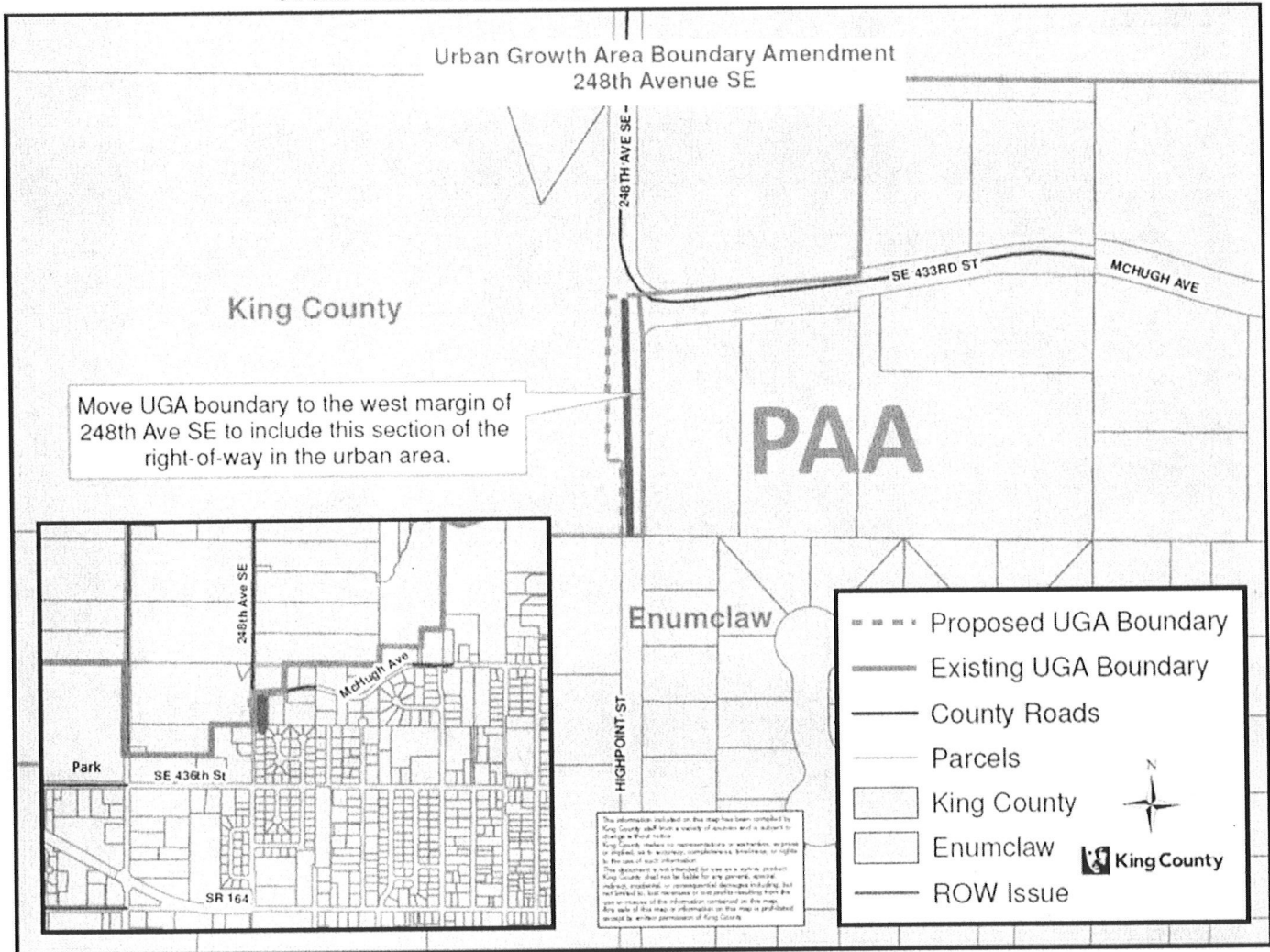
Urban Growth Area Contraction and Revision to Potential Annexation Area – East Cougar Mountain



Note: This change adds parcels to King County's unincorporated rural area. It also removes these same parcels from the City of Issaquah's Potential Annexation Area.

For Reference – Detailed Site Maps Showing Specific Amendments to Urban Growth Area Boundary, as well as Amendment to East Cougar Potential Annexation Area

Urban Growth Area Technical Amendment – 248th Ave SE



For Reference – Detailed Site Maps Showing Specific Amendments to Urban Growth Area Boundary, as well as Amendment to East Cougar Potential Annexation Area

Urban Growth Area Technical Amendment – 228th Ave SE

